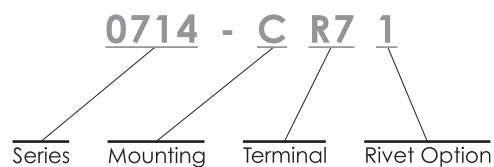
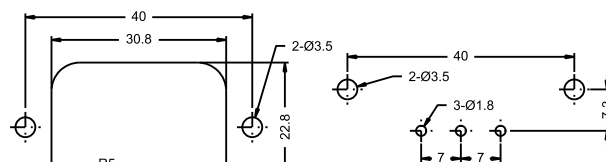
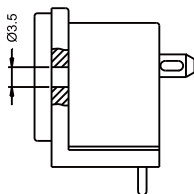
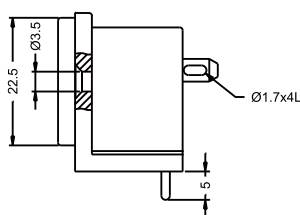
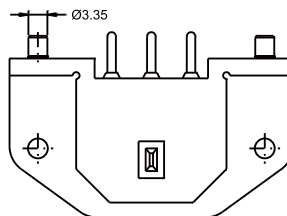
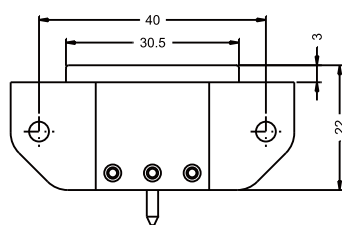
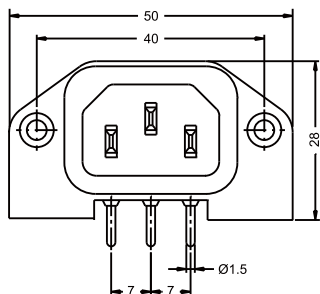


## 0714 Series



Specification	Inlet
<b>Power Rating</b>	10A 250V AC Europe 15A 250V AC North America
<b>Electric Strength</b>	AC 2,000V for 1 Minute
<b>Contact Resistance</b>	30MΩ Max.
<b>Insulation Resistance</b>	100MΩ Min. at 500V DC
<b>Operating Temperature</b>	+100°C
<b>Materials</b>	Thermoplastic UL Flammability 94V-0 & Copper Alloy
<b>Mounting</b>	C : Countersink Screw-On F : Flat Screw-On
<b>Terminal</b>	R7 : PCB Pin
<b>Rivet Option</b>	1 : With Rivet

Unit : mm



PANEL CUT-OUT

PCB LAYOUT