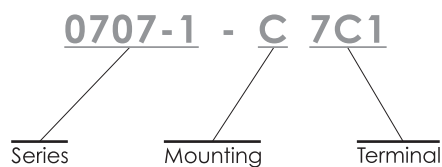
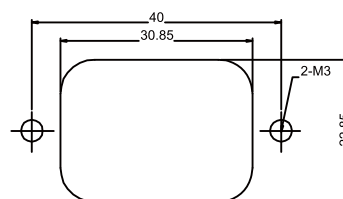
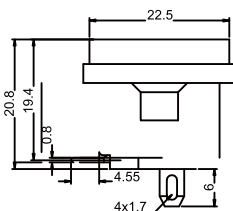
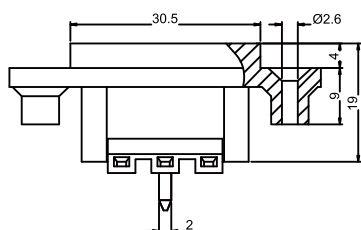
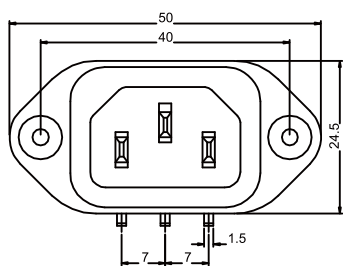


0707-1 Series



► Specification	► Inlet
Power Rating	10A 250V AC Europe 15A 250V AC North America
Electric Strength	AC 2,000V for 1 Minute
Contact Resistance	30MΩ Max.
Insulation Resistance	100MΩ Min. at 500V DC
Operating Temperature	+100°C
Materials	Thermoplastic UL Flammability 94V-0 & Copper Alloy
Mounting	C : Side Screw-On
Terminal	7C1 : PCB Pin

Unit : mm



PANEL CUT-OUT